



CANEX Metals Inc.

Creating Value Through Discovery: Gold Focused

Company Overview

Pre-resource oxide gold discovery at Gold Range, Arizona
Experienced management team with multiple discoveries
Key shareholders are experienced industry professionals
Working in a stable top-tier mining jurisdiction

Investment Highlights

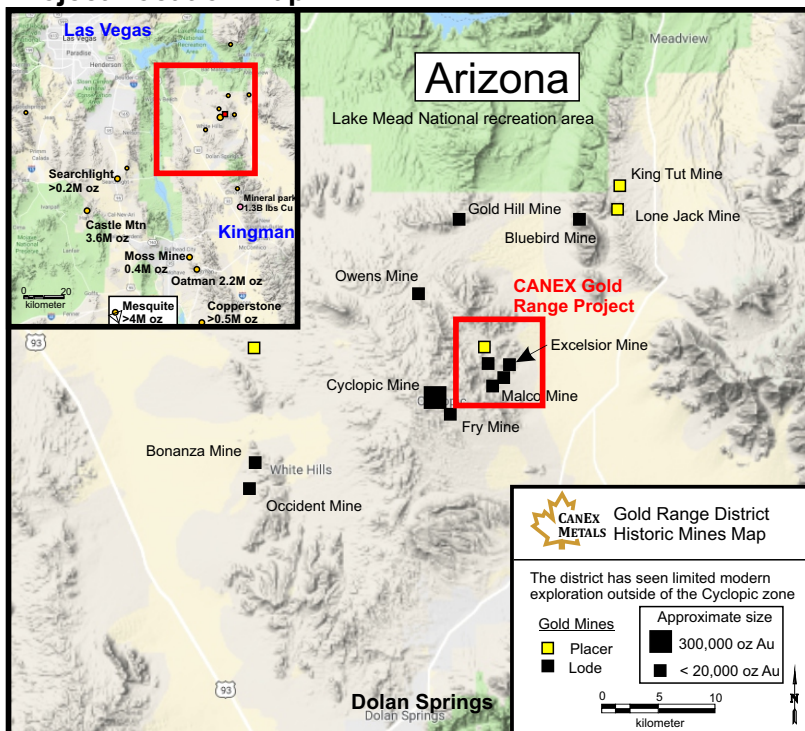
New oxide gold discovery at Gold Range Project, Arizona
Multi kilometre scale mineralized trends with new targets being advanced
Near surface oxide gold zones with excellent leach characteristics
138 holes drilled and multiple gold zones identified

- 1.0 g/t gold over 59.5 metres from surface
- 1.0 g/t gold over 48.8 metres from surface
- 1.6 g/t gold over 35.1 metres from surface
- 2.2 g/t gold over 24.4 metres from 10.7 metres depth

**Excellent Heap
Leach Grades**

**Permitting is in place, new targets and expansion potential
ready for drill testing - recent amendment filed expected shortly**

Project Location Map



Directors and Officers

Dr. Shane Ebert	President, CEO, and Director
Jean Pierre Jutras	Vice President and Director
Blair Schultz	Independent Director
Lesley Hayes	Independent Director
Greg Hanks	Independent Director
Barb O'Neill	Corporate Secretary
Chantelle Collins	CFO

News

May 8, 2023	CANEX Makes New Drill Discovery at WestGold - 35m @ 0.7 g/t Au including 7.6m @ 2.5 g/t Au
Jan. 23, 2023	Canex Intersects 27.4 Metres of 1.1 G/T Gold in New Discovery at Shaft Zone
Dec. 12, 2022	Canex Announces Drilling Results and WestGold Target Expansion at Gold Range
Nov. 22, 2022	Canex Identifies New Gold Target and Acquires Past Gold Producer
Sept. 6, 2022	Canex Makes New Drill Discovery at the Central Zone and Receives Amended Exploration Permit

Key Financials (Jan 2024) (CAD)

Share Price	\$0.055
Shares Outstanding	114m
Market Capitalization	\$6.3m
Share Price: Year high-low	\$0.03 - \$0.10
Cash and equivs. (Sept 2023)	\$0.8m
Debt	Nil

Major Shareholders

Michael Gentile	10%
Altius Minerals	7%
Directors and Management	9.5%
Phoenix Advisors	4%

Contact

Dr. Shane Ebert P.Geo.
President, CEO, and Director
shane@canexmetals.ca
www.canexmetals.ca



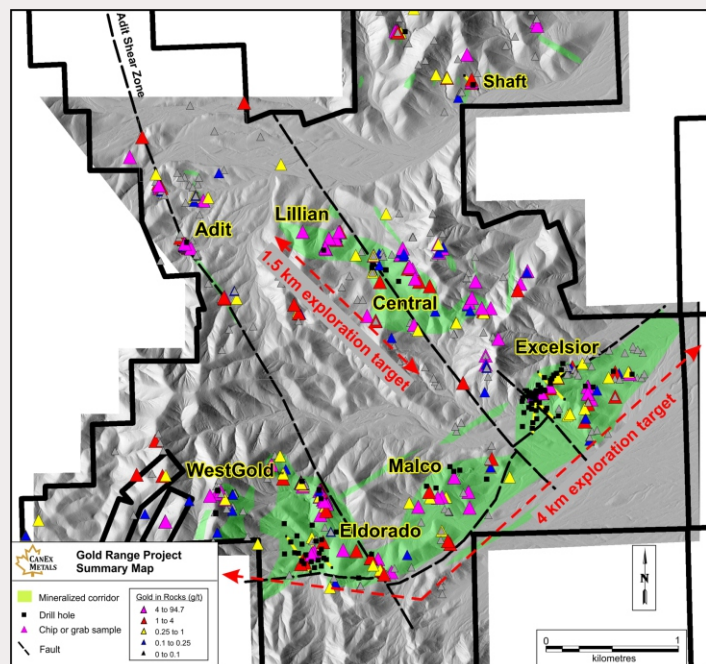
Low cost near-surface discoveries - Bulk tonnage halos to high grade veins

Nov 2023 CANEX purchased the Excelsior claims (2 patents, 11 lode claims) for US\$120,000 and 8.7m shares, consolidating 100% ownership of the Excelsior deposit and eliminating up to C\$3.5m in expenses

◉ **Excellent geologic setting** ◉ **Under explored belt** ◉ **Low cost discoveries**



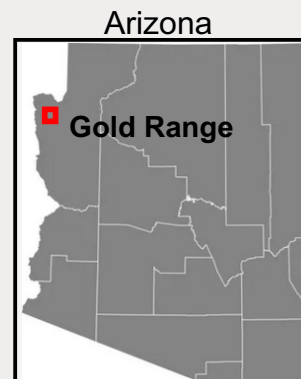
Gold Range Project



Large new gold trends identified and successfully drill tested

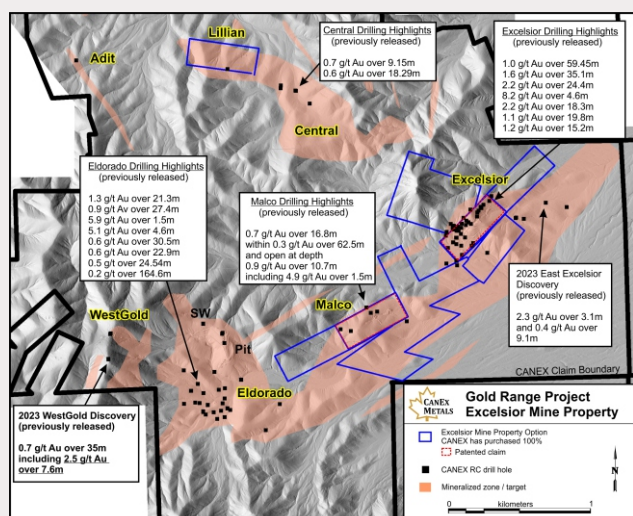
PROJECT OVERVIEW

- Under explored district with widespread gold mineralization
- 4km mineralized trend open under cover
- Multiple parallel zones identified
- New targets continually being discovered and advanced to the drill stage
- Resource potential identified at the Excelsior and Eldorado zones which show good gold continuity in drilling
- Multiple new exploration targets currently being drill tested, all have potential to significantly increase the scale of known mineralization



EXCELSIOR ZONE

- 74 drill holes have tested the Excelsior zone and confirm mineralization over 400m by up to 50m wide, by up to 100m deep, with the zone open along strike and to depth
- 3 to 4 parallel mineralized zones have been identified to the east and returned gold during 2023 drilling



Excelsior drill highlights

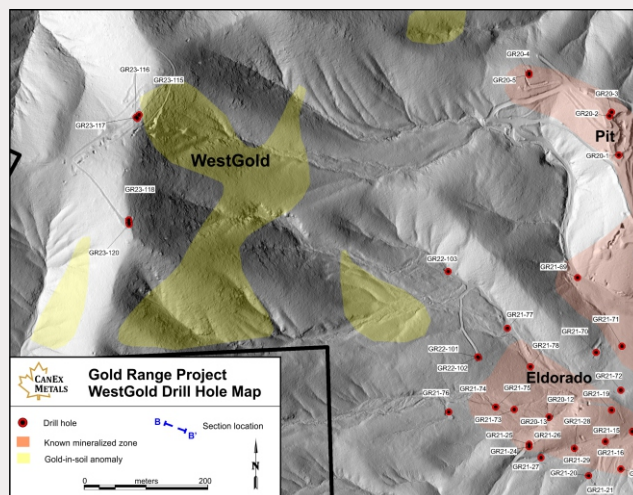
1.0 g/t gold over 59.5 metres from surface
1.6 g/t gold over 35.1 metres from surface
2.2 g/t gold over 24.4 metres from 10.7 metres depth

Dr. Shane Ebert / P.Geo.,

President of the Company, is the Qualified Person for CANEX Metals as defined by National Instrument 43-101 and has approved the technical disclosure contained in this presentation

WESTGOLD TARGET

- Highest grade gold in soil anomaly on the property
- Widespread gold mineralization identified on surface
- New Drill Discovery: 35m @ 0.7 g/t Au including 7.6m @ 2.5 g/t Au - open for expansion - 200m by 400m area



NEXT STEPS

- Permits in place, drill targets defined
- Ready for drill testing new targets and expanding known zones