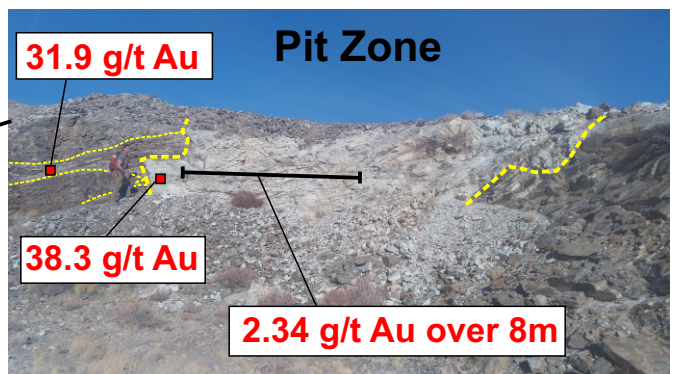
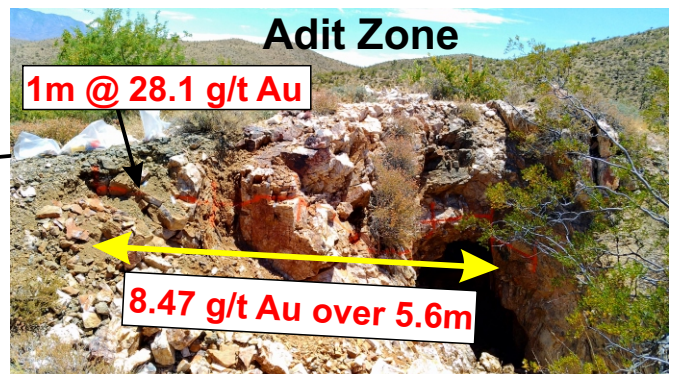
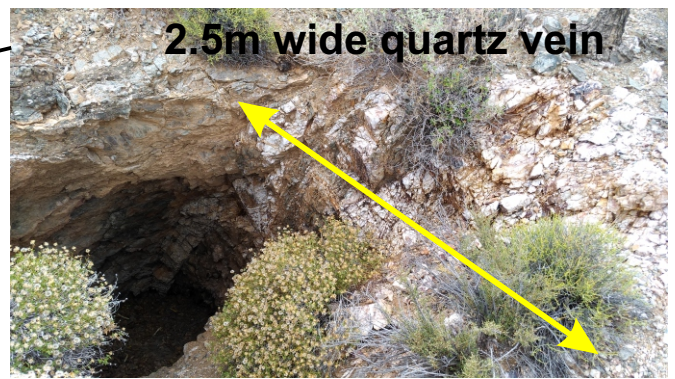
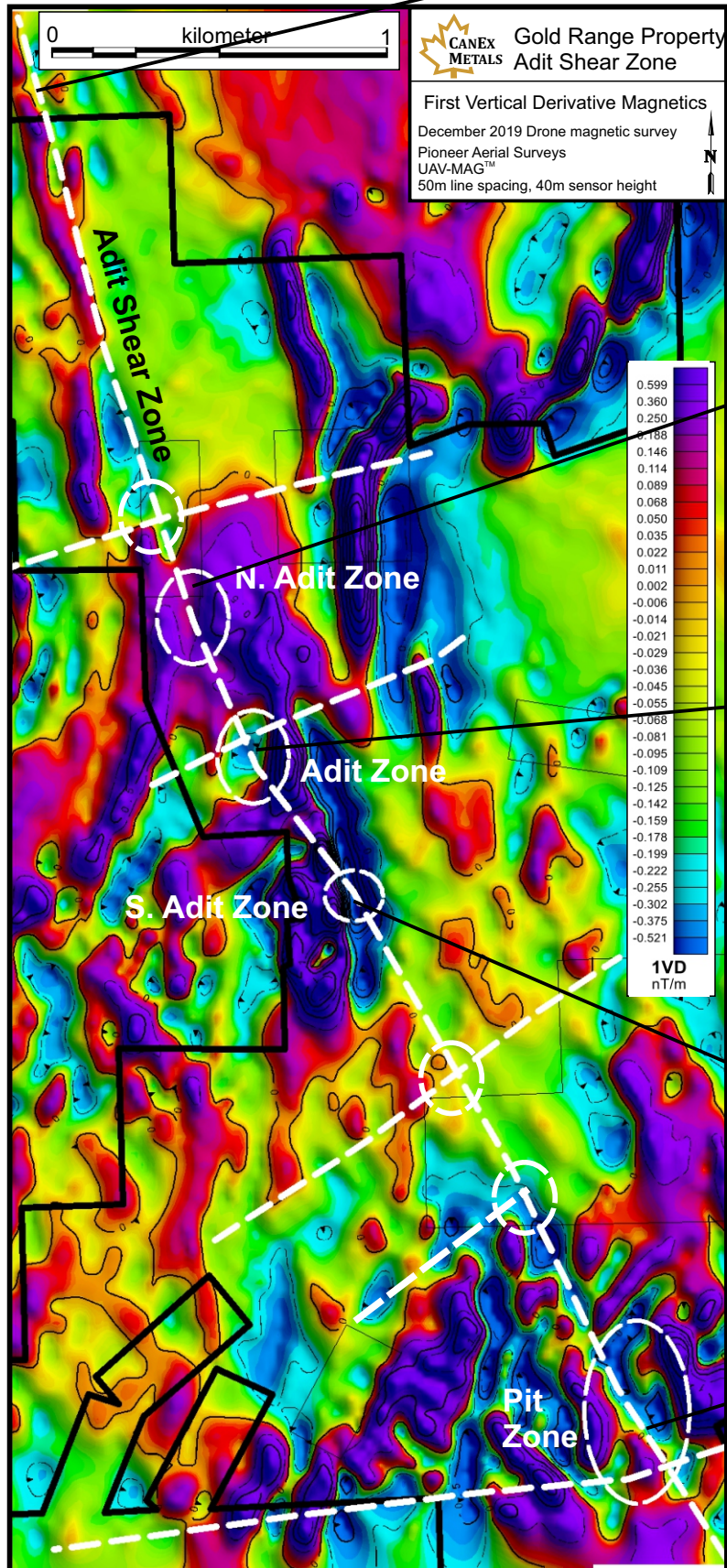
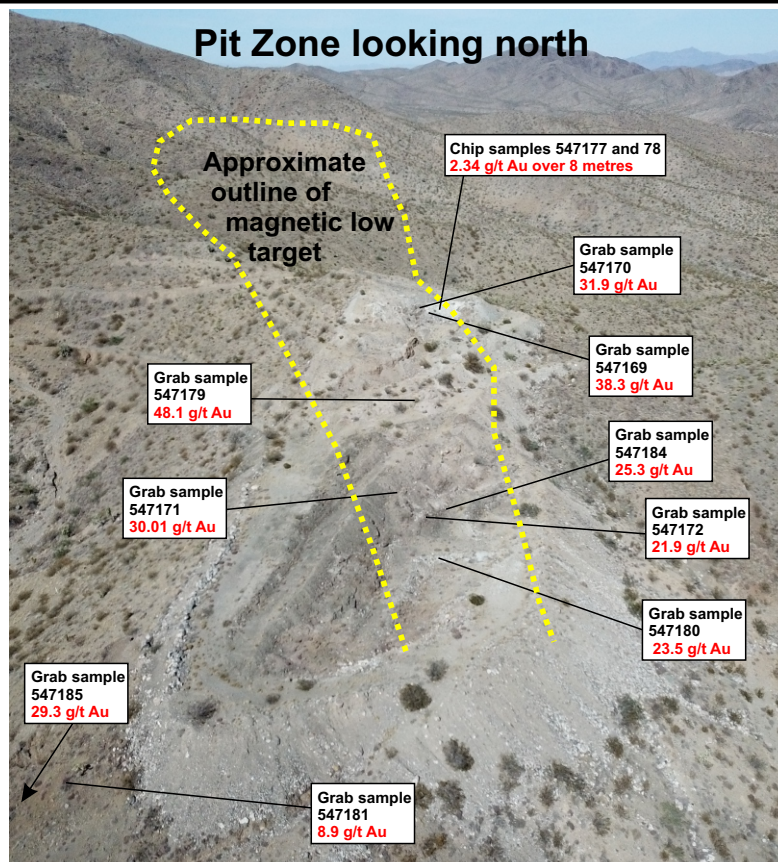
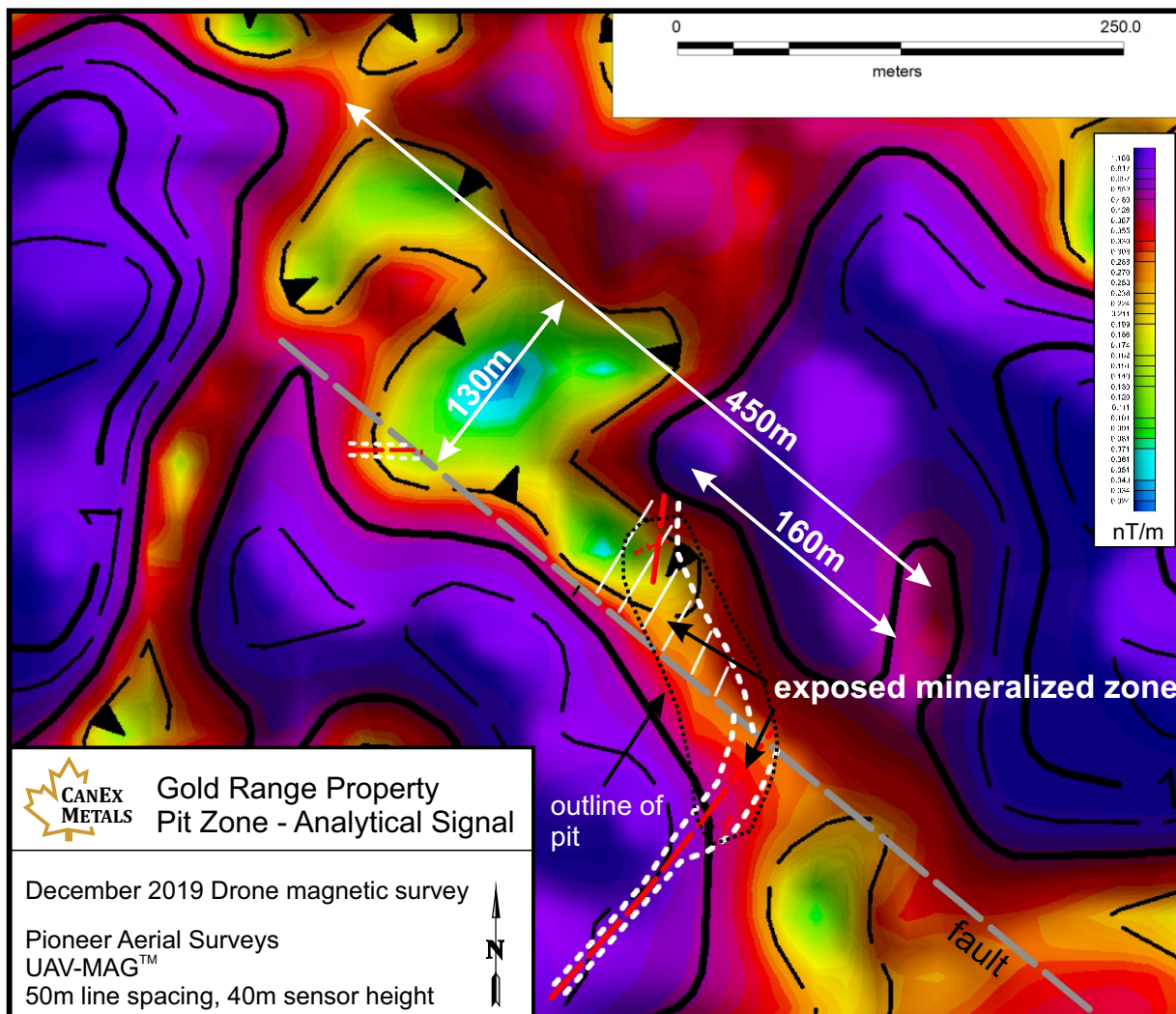


Adit Shear Zone Defined for over 5km
Select Property scale targets as white circles
 (surface expression shown on photos to right)



Exposed mineralization at the Pit Zone (white dotted lines) strongly correlates with an analytical signal magnetic low which suggests the zone is open to the northwest and could be at least 450 metres long. The magnetic low is interpreted to represent hydrothermal alteration and magnetite destruction within the highly magnetic orthogneiss host rock



East Zone Targeting - A pronounced linear magnetic low within a mostly covered area correlates well with known mineralization from limited surface sampling. The magnetic low target is 700 metres long, up to 100 metres wide, and open along strike.

